

1

2

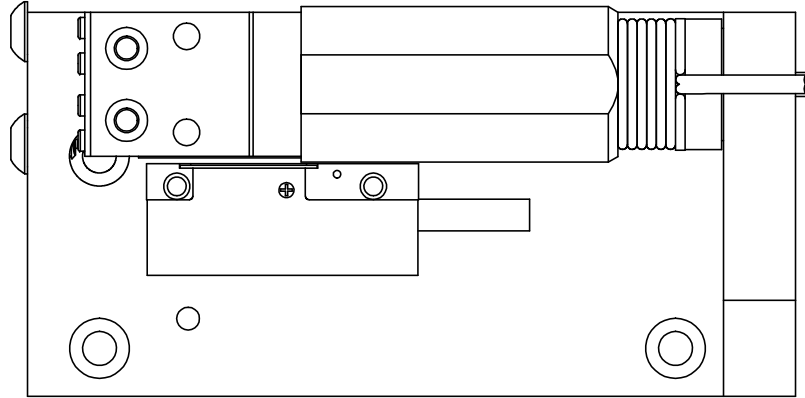
3

4

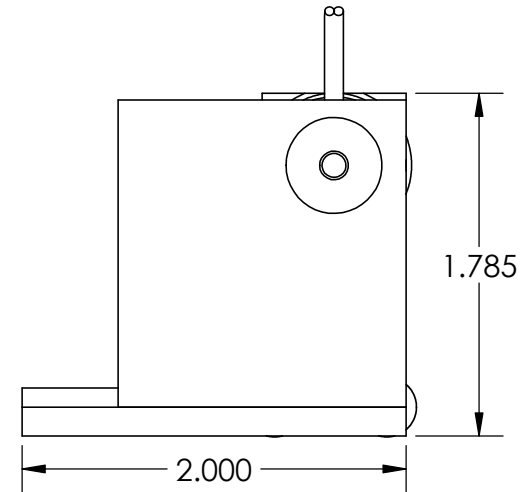
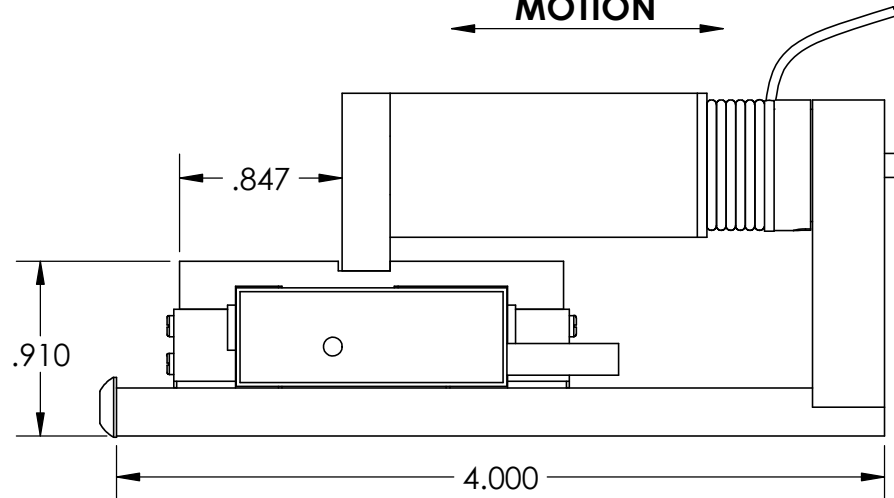
5

REVISION TABLE

REV	ECN#	DESCRIPTION	REV BY	APPROVED	DATE
---	---	Original Drawing	SDC	MPW	5-12-17



MOTION



MOTOR SHOWN AT MID-STROKE



H2W Technologies, Inc.
Santa Clarita, CA 91350 USA
Tel: (661) 291-1620
www.h2wtech.com

These drawings and specifications are the property of H2W Technologies, Inc. They are issued in confidence and shall not be reproduced, copied, or used without written permission from H2W Technologies, Inc.

UNLESS SPECIFIED OTHERWISE:
All dimensions are in inches
Standard Tolerances are as follows
.XXX ±.005 ANGLES ±.1°
.XX ±.010 FILLETS .010
.X ±.020 CORNERS .010
Remove All Burrs and Sharp Edges

**FOR
REFERENCE
ONLY**

MATERIAL

FINISH

TITLE

Voice Coil Positioning Stage
Model #: VCS06-005-CR-001-M

DWG #

31-0809

REV

DATE

5-12-17

SHEET

1 of 3

1

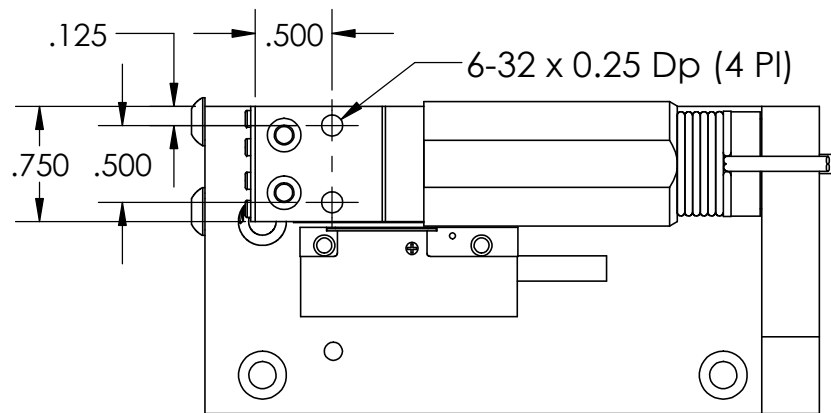
2

3

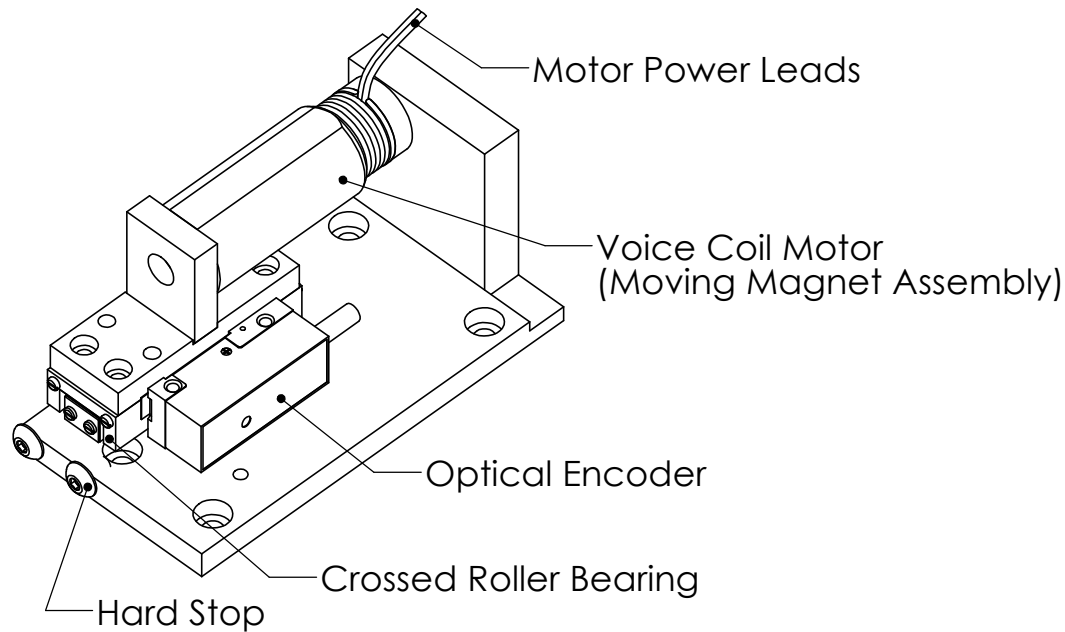
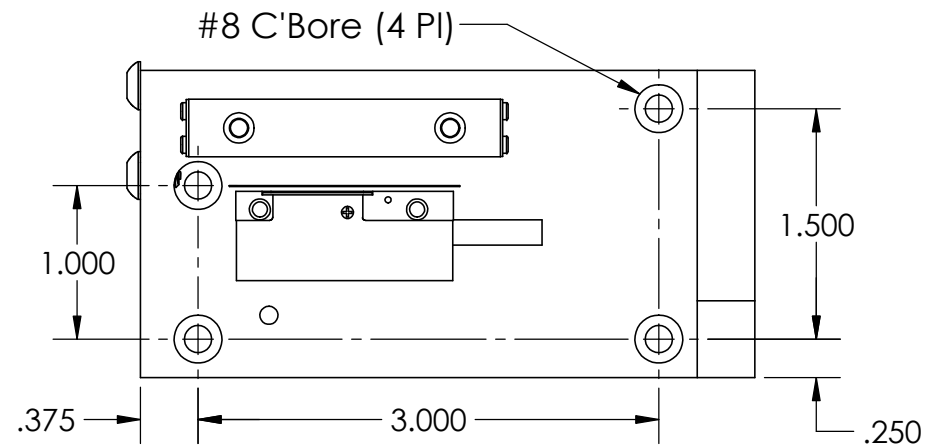
4

5

PAYLOAD MOUNTING HOLES



PARTS HAVE BEEN HIDDEN TO SHOW STAGE MOUNTING HOLES



H2W Technologies, Inc.
Santa Clarita, CA 91350 USA
Tel: (661) 291-1620
www.h2wtech.com

These drawings and specifications are the property of H2W Technologies, Inc. They are issued in confidence and shall not be reproduced, copied, or used without written permission from H2W Technologies, Inc.

UNLESS SPECIFIED OTHERWISE:
All dimensions are in inches
Standard Tolerances are as follows
.XXX ±.005 ANGLES ±.1°
.XX ±.010 FILLETS .010
.X ±.020 CORNERS .010
Remove All Burrs and Sharp Edges

**FOR
REFERENCE
ONLY**

MATERIAL

FINISH

TITLE

**Voice Coil Positioning Stage
Model #: VCS06-005-CR-001-M**

DWG #

31-0809

REV

DATE

5-12-17

SHEET

2 of 3

1

2

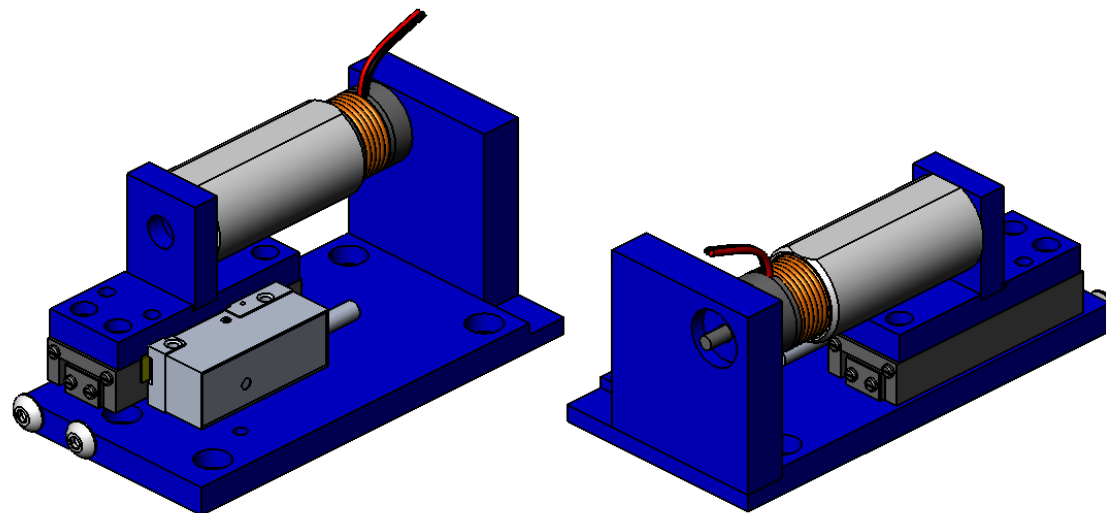
3

4

5

VOICE COIL POSITIONING STAGE SPECIFICATIONS

Motor P/N	NCC06-08-005-2X	
Stroke	0.60"	15.2 mm
Encoder Resolution	0.1 micron	
Bearing Type	Crossed Roller	
Moving Mass	0.24 LBS	109 grams
Total Mass	0.6 LBS	272 grams
Resistance @ 20C	3.0 ohms	
Inductance @ 20C	0.60 mH	
Electrical Time Constant	0.20 msec	
Motor Constant	0.50 LBS/SQRT(Watt)	2.23 N/SQRT(Watt)
Force Constant	0.87 LBS/Amp	3.85 N/Amp
Back EMF	0.10 V/ips	3.85 V/m/sec
Continuous Force	0.85 LBS	3.78 N
Max Power @ 100% Duty	3 Watts	
Peak Force	2.55 LBS	11.35 N
Max Power @ 10% Duty	26 Watts	



H2W Technologies, Inc.
 Santa Clarita, CA 91350 USA
 Tel: (661) 291-1620
www.h2wtech.com

These drawings and specifications are the property of H2W Technologies, Inc. They are issued in confidence and shall not be reproduced, copied, or used without written permission from H2W Technologies, Inc.

UNLESS SPECIFIED OTHERWISE:
 All dimensions are in inches
 Standard Tolerances are as follows
 .XXX ±.005 ANGLES ±.1°
 .XX ±.010 FILLETS .010
 .X ±.020 CORNERS .010
 Remove All Burrs and Sharp Edges

**FOR
 REFERENCE
 ONLY**

MATERIAL

FINISH

TITLE

Voice Coil Positioning Stage
 Model #: VCS06-005-CR-001-M

DWG #

31-0809

REV

DATE

5-12-17

SHEET

3 of 3